



Eco-Smart, Inc.

TOLL FREE: (888)329-2705 FAX: (941)377-9460 info@eco-smart.com

Disaster Relief Housing
Short Term Emergency Housing Leads to Long Term Solutions
Single Dwellings



Steel Insulated Wall Panels 5 1/2 "
Cold Formed Steel Trusses w/ Metal Decking
Engineered to withstand up to 160 mph Winds
Cold Formed Steel Interior Walls
All Steel 50 KSI / G60 Galvanized
Open Cell Sprayfoam Attic Insulation

Move-in in 5 - 7 days!

Panelized Steel Hybrid Building Shell

Factory in a Box

can be placed on site, anywhere in the world, saving time, transportation costs, money, and utilizing local labor.



Disaster Relief Housing -- Single Dwellings

Model 500

484 SF Living

80 SF Porch

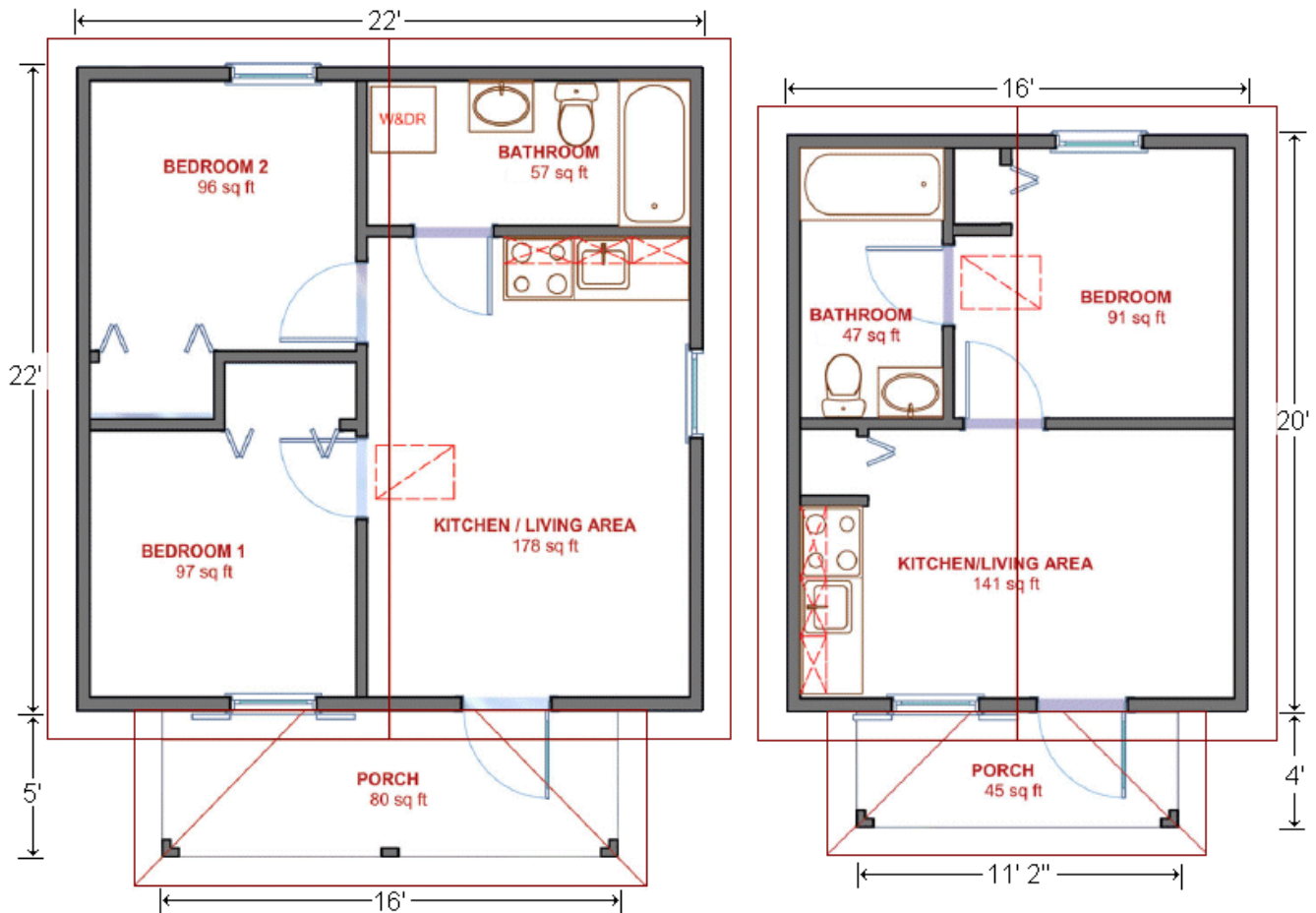
564 SF Total

Model 300

320 SF Living

45 SF Porch

365 SF Total



See Also:

**Disaster Relief Housing
Multiple-dwellings
3 Models - 3 to 6 Units Each
Three Days to Move-in
www.eco-smart.com**

