

# RIO DUPLEX

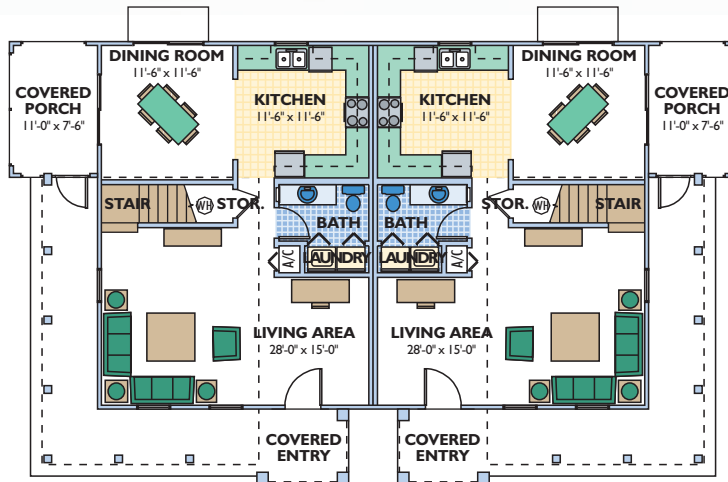
ENERGY WISE HOME

OVERALL DIMENSIONS

63'-4" x 36'-8"

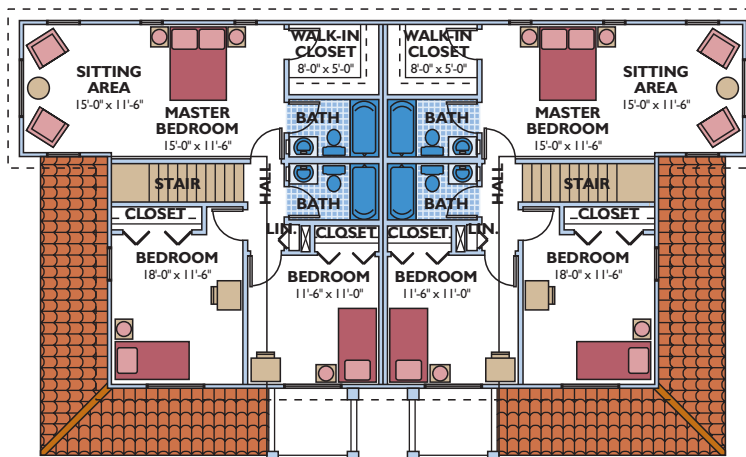


Stucco, columns, archways, window and door accents, and a metal barrel tile roof are the perfect combination in this Spanish style home. All rooms are spacious in design, especially the living area.



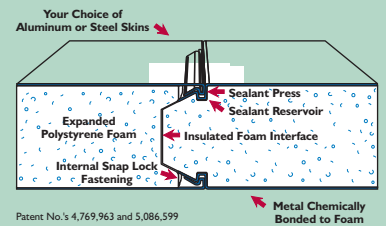
LOWER LEVEL ▲

UPPER LEVEL ▼

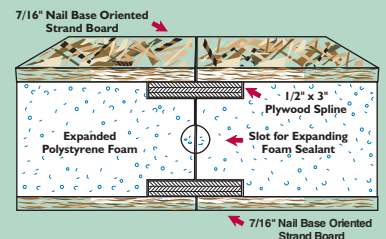


Eco-\$mart offers a complete line of pre-cut and pre-engineered home and building packages utilizing structural insulated panel technology (SIPs). All packages erect quickly, are stronger than conventional framing and extremely energy efficient. SIPs can be clad in conventional OSB or in steel incorporating the patented Snap-N-Lock panel connection.

### Snap-N-Lock™ Insulated Panel



### Dual Plywood Spline Joint



**Living Area** 1,627 sq. ft.  
 side covered porch 91 sq. ft.  
 front covered porch 233 sq. ft.  
**TOTAL** 1,951 sq. ft.  
 2 story, 3 bedroom, 3 bath

Plans and specifications are subject to change without notice. All dimensions are approximate.

**ECO-\$MART, INC**

TOLL FREE: (888)329-2705 info@eco-smart.com www.eco-smart.com