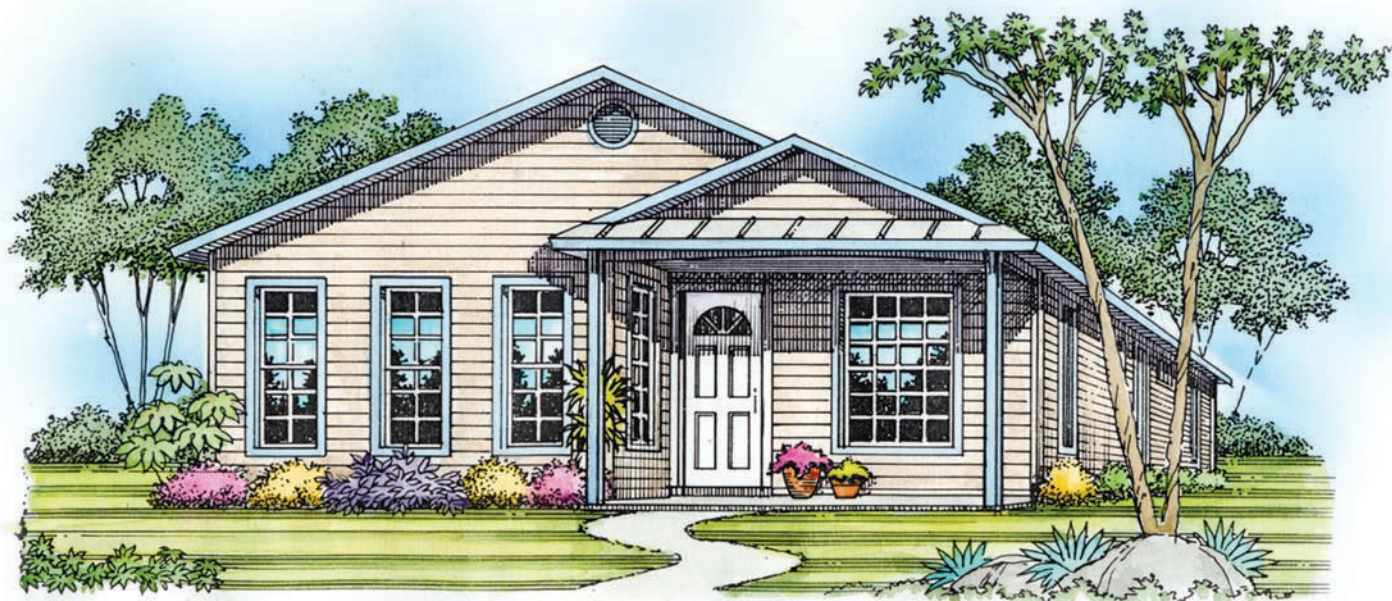


# WINDHAM

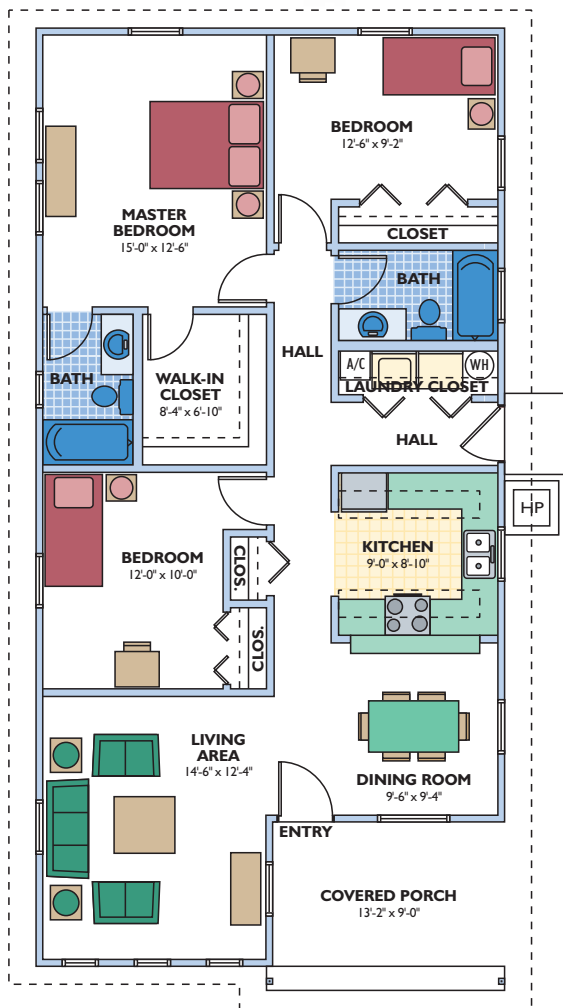
ENERGY WISE HOME

OVERALL DIMENSIONS

26'-0" x 52'-0"



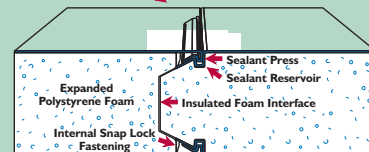
The entryway is very inviting, with its attractive gable roof lines and large covered porch. As you enter, you'll notice that the living area is tucked off to your left every so slightly, offering some privacy. The pass-through to the dining area offers added convenience. Each room is a comfortable size to fit furnishings.



Eco-\$mart offers a complete line of pre-cut and pre-engineered home and building packages utilizing structural insulated panel technology (SIPs). All packages erect quickly, are stronger than conventional framing and extremely energy efficient. SIPs can be clad in conventional OSB or in steel incorporating the patented Snap-N-Lock panel connection.

### Snap-N-Lock™ Insulated Panel

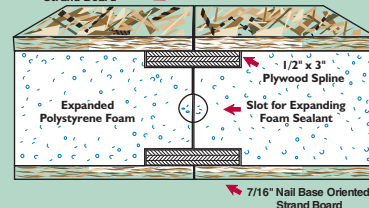
Your Choice of Aluminum or Steel Skins



Patent No.'s 4,769,963 and 5,086,599

### Dual Plywood Spline Joint

7/16" Nail Base Oriented Strand Board



Living Area	1,249 sq.ft.
Front Porch	120 sq.ft.
<b>TOTAL</b>	<b>1,369 sq.ft.</b>
3 bedroom, 2 bath	

Plans and specifications are subject to change without notice. All dimensions are approximate.

ECO-\$MART, INC

TOLL FREE:(888)329-2705 info@eco-smart.com www.eco-smart.com