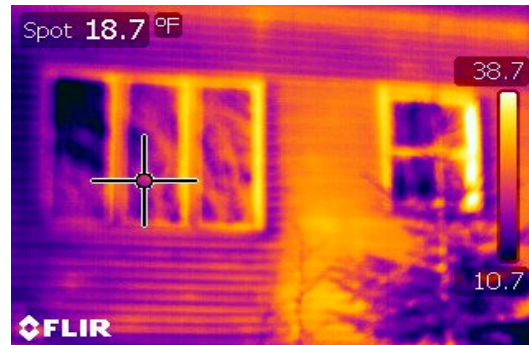
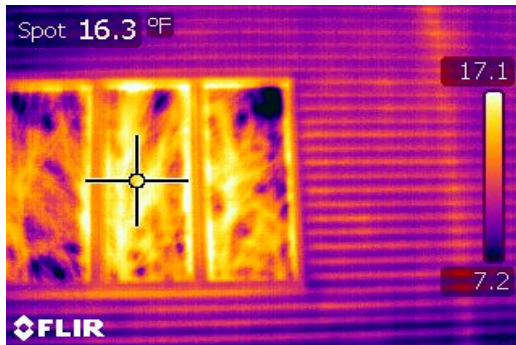


Be More Comfortable: “Insulate Your Windows” with Eco-Flector!

On a 13 Degree Day in Maine



Looking out through the Eco-Flector Window Insulators in the winter configuration (above)



The Outside Window Glass Temperature was 16.3 degrees and 18.7 degrees



While 13 degrees outside, inside the home, the R22 Insulated Wall temperature (Spot 1) was 67.3 degrees and the Eco-Flector Insulator temperature (Spot 2) was 64.4 degrees.

GET COMFORT LIKE A WELL INSULATED WALL AND KEEP YOUR VIEW!

For more information contact: Eco-Smart, Inc. (888) 329-2705 / info@eco-smart.com