

# SolarBlend™ Roof Tile



## ELEGANT, EFFICIENT, ECONOMICAL SOLAR POWER SYSTEMS

Suntech's SolarBlend™ Roof Tile is a unique product that maintains the natural look of your property while generating clean, safe, efficient electricity from the sun. The SolarBlend™ Roof Tile is designed for residential or commercial sloped roofs, and integrates seamlessly with ordinary concrete roof tiles, maintaining the aesthetic appeal of the roof.

## FEATURES

- Easily installed using the Tile Roof Institute's (TRI) standards
- Available in multiple colors
- Designed to integrate with both flat and S-Tile concrete roof system
- Long term reliability and low maintenance costs
- Robust, weatherproof, Class A fire-rated with no exposed roof penetrations

## QUALITY AND SAFETY

- Lightweight, safe, and easy to install
- Snow load capacity over 200 lbs/sq ft
- Wind rated to 80 mph ( 150mph with foam glue )
- Suntech's industry-leading 25 year power output warranty
- Certified to UL 1703; certified as a Class A roofing system under UL 790 and ASTM E108



Photo Courtesy: Century Roof & Solar



Distributed by: Eco-Smart, Inc. (888)329-2705 ph / (941)377-9460 fx / info@eco-smart.com

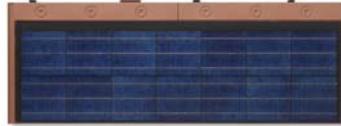
**SolarBlend™ Roof Tile**

slate gray



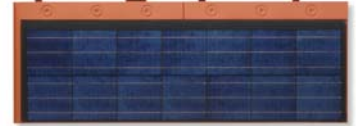
**SolarBlend™ Roof Tile**

earth brown



**SolarBlend™ Roof Tile**

terracotta



**MOST COMPATIBLE ROOF TILES**

slate range

lehigh blend



sierra madre

charcoal range

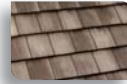
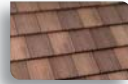


**MOST COMPATIBLE ROOF TILES**

arcadia

coastal blend

light brown range



brown range

corona del mar



**MOST COMPATIBLE ROOF TILES**

sunset blend

terracotta flashed

weatherd  
terracotta blend



tehachapi blend

tucson blend

terracotta



**TECHNICAL SPECIFICATION AT A GLANCE**

<b>Product description</b>	High efficiency crystalline photovoltaic cells encapsulated in multi-layered lamination of glass, EVA, and Tedlar with polycarbonate frame.
<b>Color availability</b>	Slate Gray, Brown, Terracotta; designed to integrate seamlessly with both flat and S tile concrete roof systems
<b>Installation weight</b>	325 lbs. per 100 sq.ft., 14 lbs. per tile
<b>Roofing applications</b>	New construction and retrofit; residential and commercial roofs; pitch 3:12 or greater
<b>Actual size</b>	17" x 47" x 1 1/4"
<b>Exposed size</b>	13.5" x 46" x 1 1/4"
<b>Weight</b>	14 lbs.
<b>Connector type</b>	Multi contact M/F
<b>Roofing information</b>	Head lap: 3.5 in. (approx.) Exposure: 13.5 in.
<b>Area per kWp (AC)</b>	100 sq. ft.
<b>Model Numbers</b>	STP050D-5/ZCB Slate gray STP050D-5/ZCF Brown STP050D-5/ZCG Terracotta
<b>Maximum Power at STC (Pmax)</b>	50 Wp DC
<b>Optimum Operating Current (Imp)</b>	7.36A
<b>Optimum Operating Voltage (Vmp)</b>	6.8V
<b>Short - Circuit Current (Isc)</b>	7.95A
<b>Open - Circuit Voltage (Voc)</b>	8.6V
<b>Bypass diode</b>	1 per tile
<b>Max. system voltage</b>	600 V DC
<b>Operating temperature</b>	-40 to +85° C
<b>Temperature Coefficient of Voc</b>	-0.409%/° C
<b>Temperature Coefficient of Isc</b>	0.088%/° C

STC: Irradiance 1000W/m2, module temperature 25°C, AM=1.5

**WARRANTY**

Suntech power warranty guarantees 90% power output for 12 years, 80% power output for 25 years.

© 2010 Suntech Power Holdings Co., Ltd.



www.suntech-power.com

Distributed by: Eco-\$mart, Inc. (888)329-2705 ph / (941)377-9460 fx / info@eco-smart.com