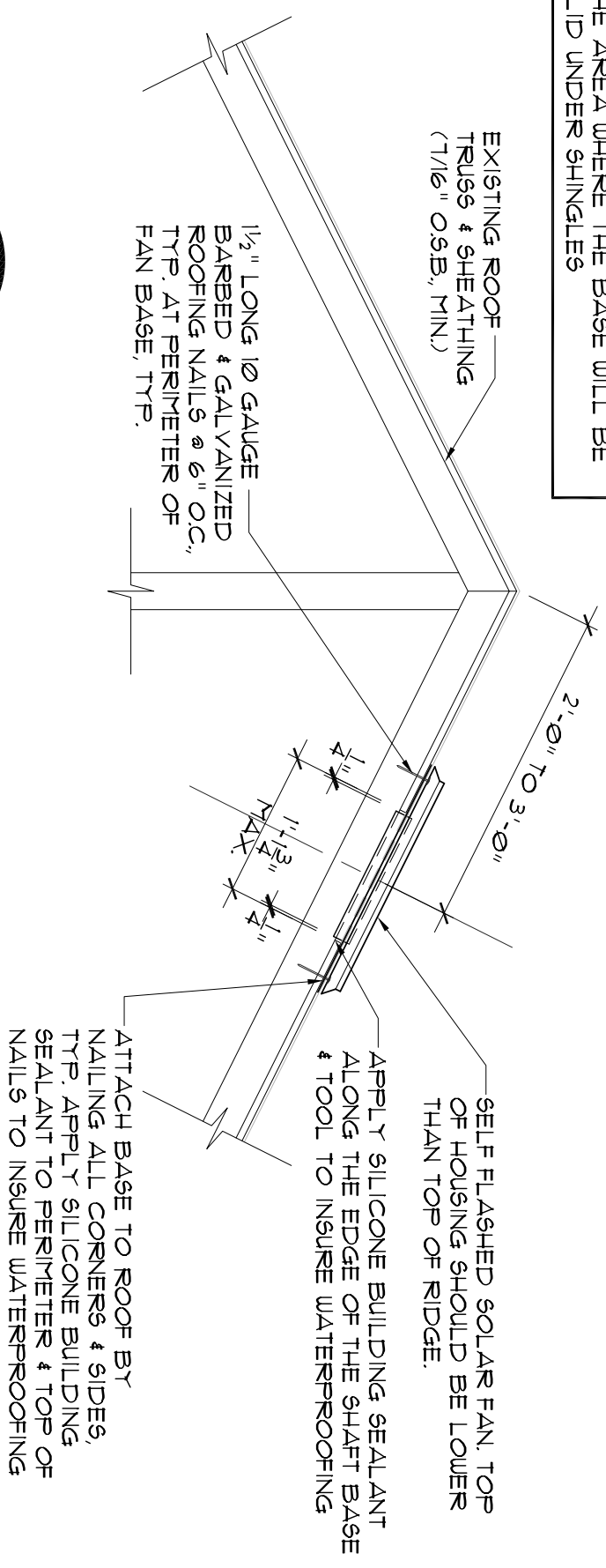


NOTES:

- FAN CONNECTIONS SHOWN HAVE BEEN DESIGNED TO RESIST WIND LOADS OUTLINED IN 2004 FLORIDA BUILDING CODE, CHAPTER 16, FOR 140 MPH EXPOSURE "C" WIND VELOCITY, AND FOR ASCE 1-98 CHAPTER 6.0, 140 MPH EXPOSURE "C" WIND VELOCITY, TYPICALLY. MAXIMUM MEAN ROOF HEIGHT = 20'-0", TYPICALLY
- NAIL CAPACITIES AND EMBEDMENTS ARE BASED UPON "NATIONAL DESIGN SPECIFICATION FOR STRESS GRADE LUMBER AND FASTENINGS" AS PUBLISHED BY THE NATIONAL FOREST PRODUCTS ASSOCIATION.

NOTE: REMOVE ANY ROOFING NAILS IN THE AREA WHERE THE BASE WILL BE SLID UNDER SHINGLES

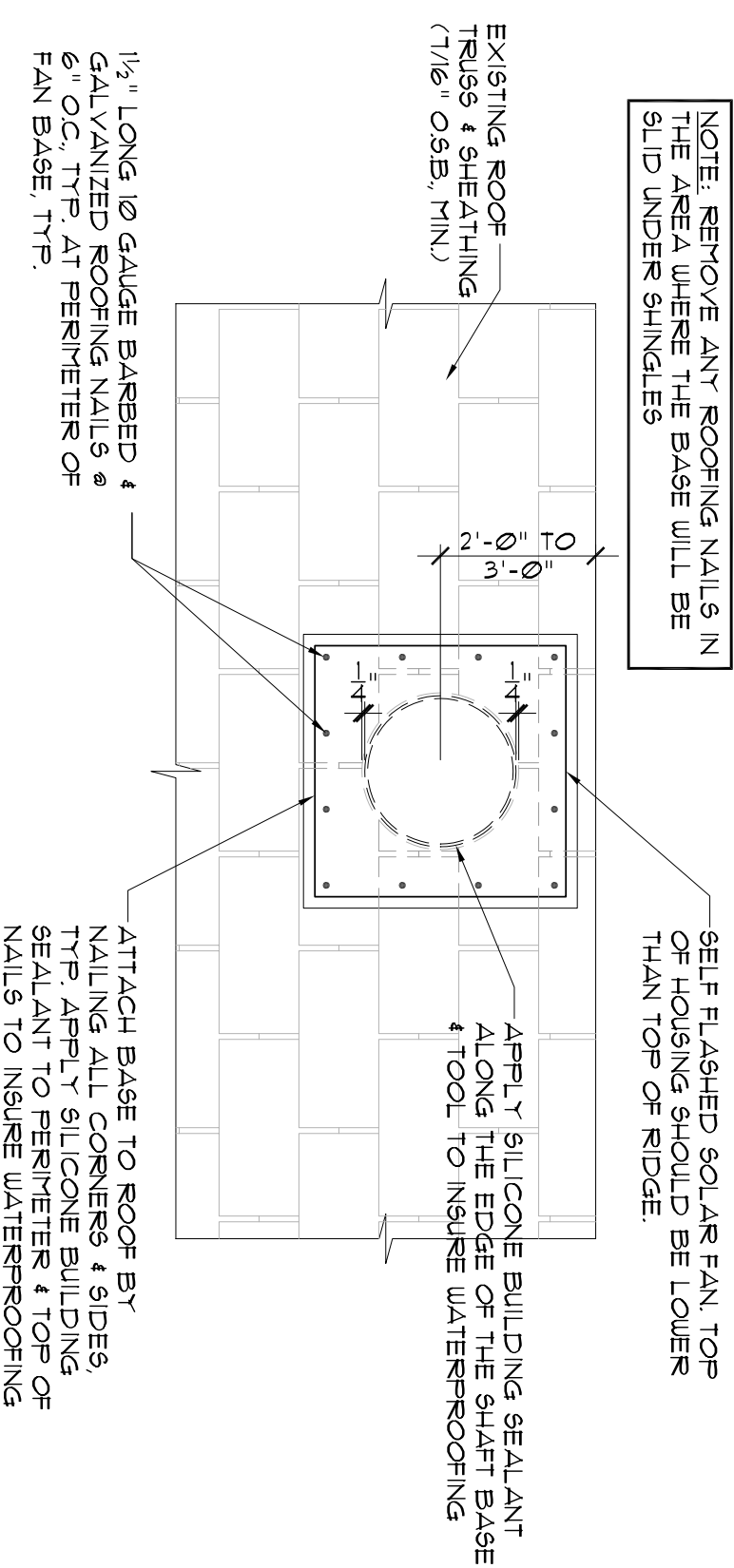


1

SECTION 1 of NEW ROOF OPENING

SCALE: 3/4" = 1'-0"

NOTE: REMOVE ANY ROOFING NAILS IN THE AREA WHERE THE BASE WILL BE SLID UNDER SHINGLES



2

NEW ROOF OPENING PLAN

SCALE: 3/4" = 1'-0"

SK-01

Solar Fan Installation
State of Florida



PLOWFIELD & ASSOCIATES
R.L. BLOWFIELD & ASSOCIATES, INC.
Specialty Engineers
1090 Villa Springs Drive
Winter Springs, FL 32708
Eng. Business #82395
Phone: (407) 697-6657
Fax: (407) 697-6480
plowfield@asscoidates.com

REV. NO.	DATE	DESCRIPTION

JOB NO.:	06093
DRAWN BY:	TJM
CHECKED BY:	RLP
APPROVED BY:	RLP
DATE:	04/17/06
SHEET	
SK-01	